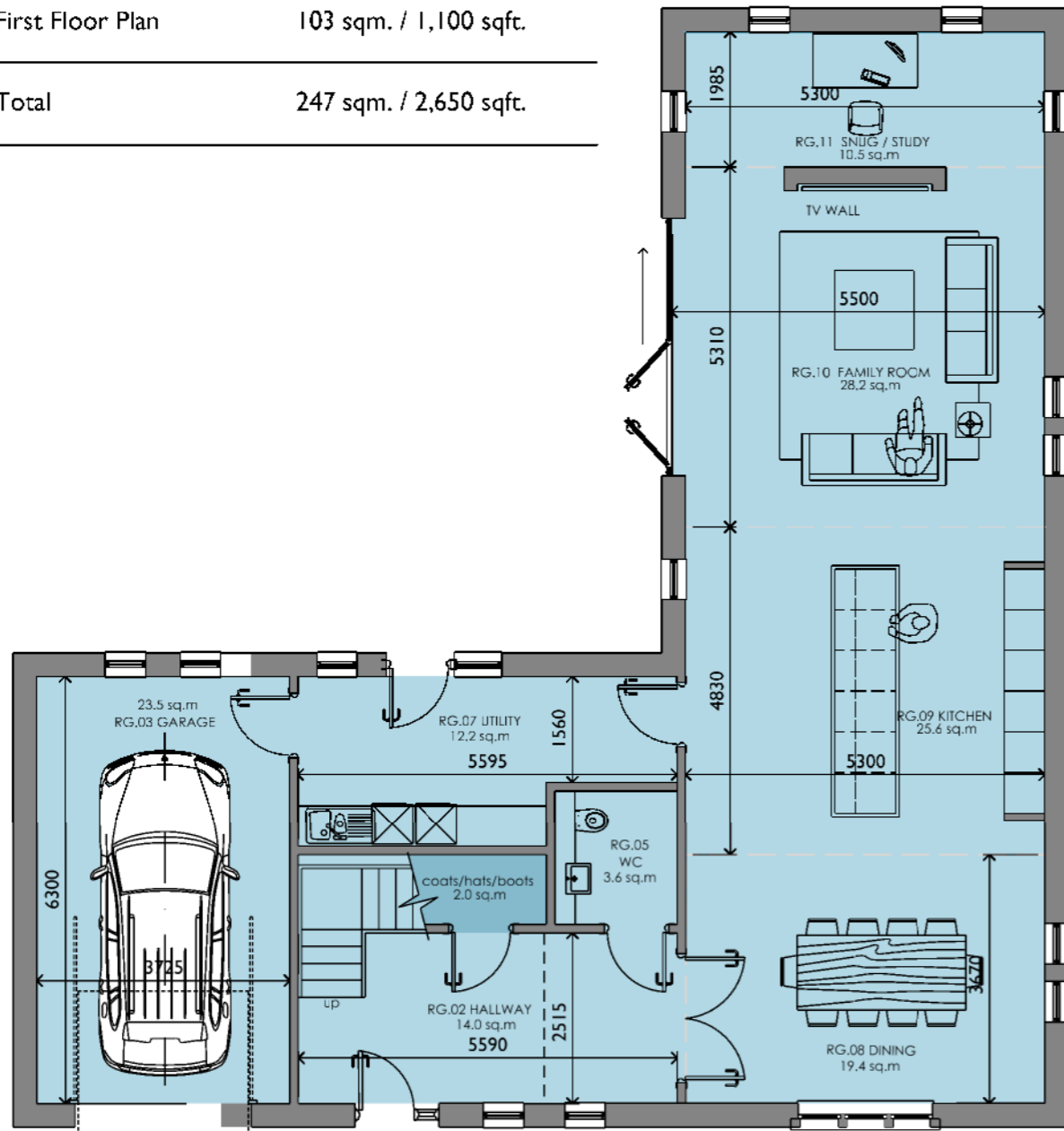
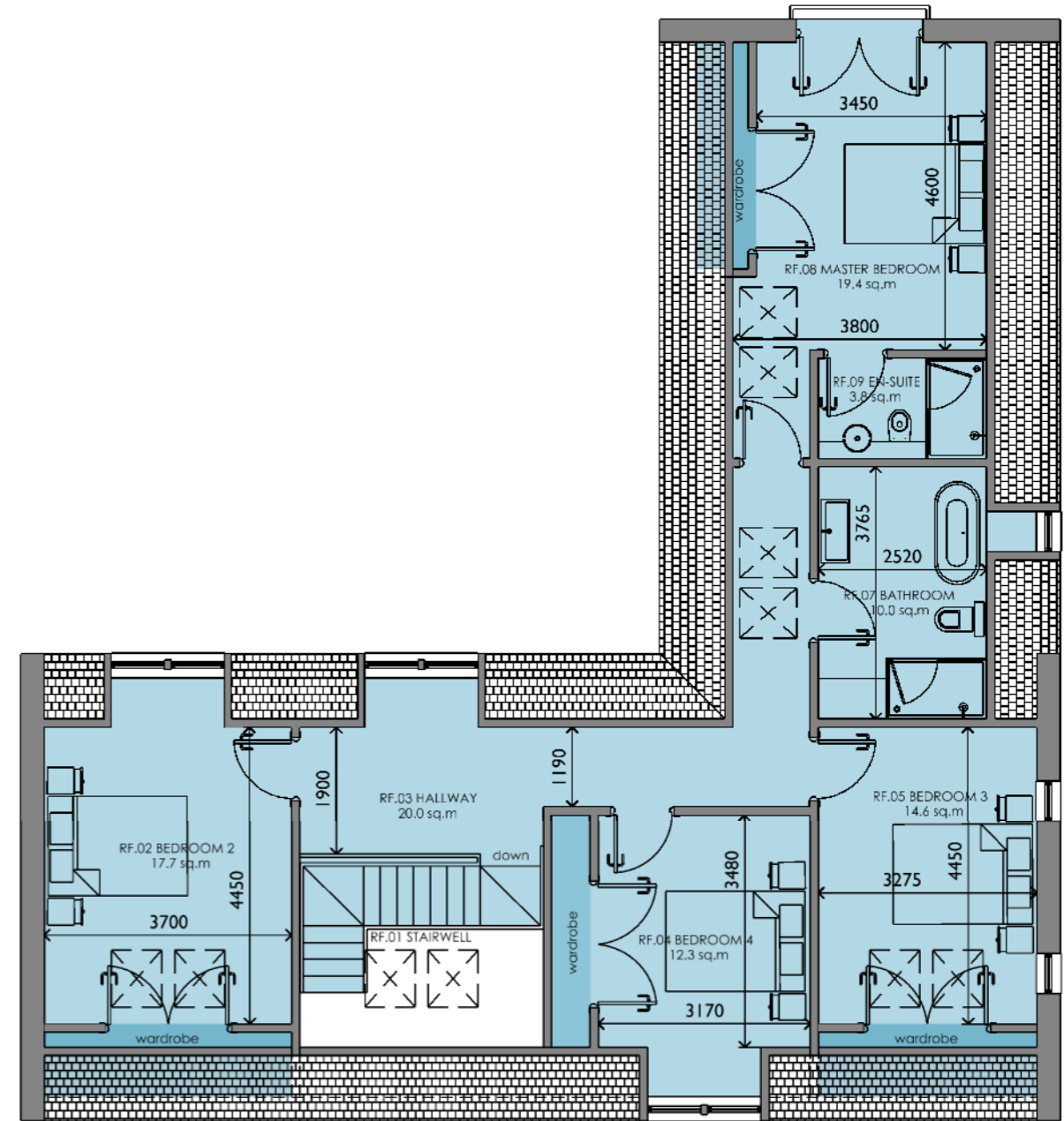


DEVELOPMENT SCHEDULE

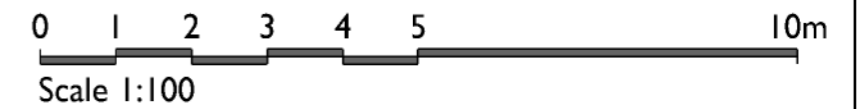
Building Footprint	165 sqm. / 1,776 sqft.
Ground Floor Plan	144 sqm. / 1,550 sqft.
First Floor Plan	103 sqm. / 1,100 sqft.
Total	247 sqm. / 2,650 sqft.



GROUND FLOOR

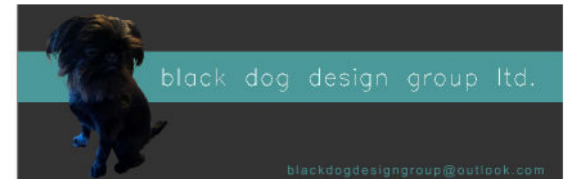


FIRST FLOOR



PL-03 Proposed Plot 5 Floor Plans 1:100

Residential Development, Pattiesmuir, Fife





REAR ELEVATION



SIDE ELEVATION



FRONT ELEVATION



SIDE ELEVATION

